

# D700.SH.MINI Curve LED Surface Mounted Downlight

## Datasheet



**TRU-COLOUR.**

### Product Codes

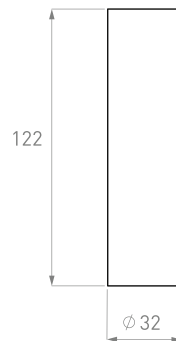
<b>Unit:</b> D700.SH.MINI	<b>Family:</b> CR	<b>Colour temp. (K):</b> 1.8K.3.1K (1800K-3100K) (Nightshift Dim to Warm) (Special Order) 2.7K (2700K) (Special Order) 4K (4000K) (Special Order) 5K (5000K) (Special Order)	<b>Beam Angle:</b> 36°	<b>Color:</b> B (BLACK) W (WHITE)	<b>Driver:</b> PHASE (PHASE)	<b>Version:</b> 1.0
------------------------------	----------------------	--	---------------------------	---	---------------------------------	------------------------

### Dimensions (mm)

Front view

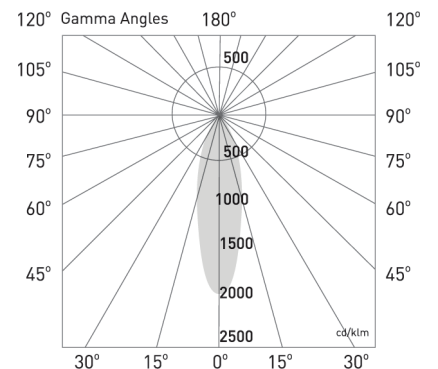


Side view



### Photometrics

**Source lumen output:** 810lm  
**Delivered lumen:** 640lm  
**Efficacy:** 71lm/W  
**Colour temp.:** 3000K  
**Beam angle:** 36°  
**CRI:** >98  
**Standard deviation of colour matching (SDCM):** 2 Macadam steps



## Electrical

---

**Input Voltage:**  
220V-265V

**Power Usage:**  
9W

**Driver Power Factor:**  
>0.9

**IP Rating:**  
IP44

**Surge Protection:**  
3100V

## Operational

---

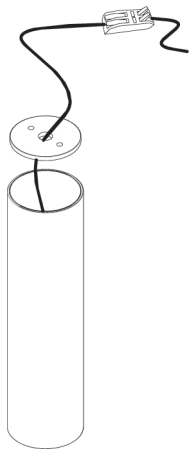
**Ambient Temp.:**  
-20°C to 50°C

**Warranty:**  
7 Years

**Lifetime:**  
70,000hrs

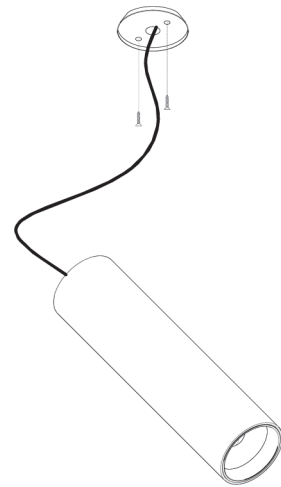
## Installation

---



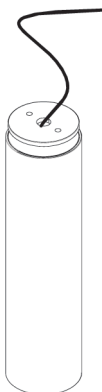
### Step 1

Connect the 240V power cable to the terminal block.



### Step 2

Fasten the base plate to the ceiling using the mounting screws.



### Step 3

Reattach the cover of junction box and return it into the luminaire. Rotate the luminaire to fix it on the base plate.



### Step 4

Installation complete.