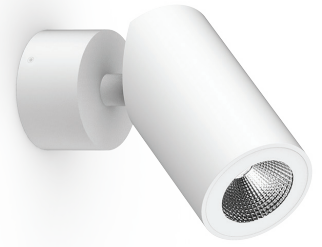


# W700.SHIPX Curve LED Wall Light

## Datasheet



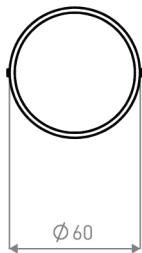
**TRU-COLOUR®**

### Product Codes

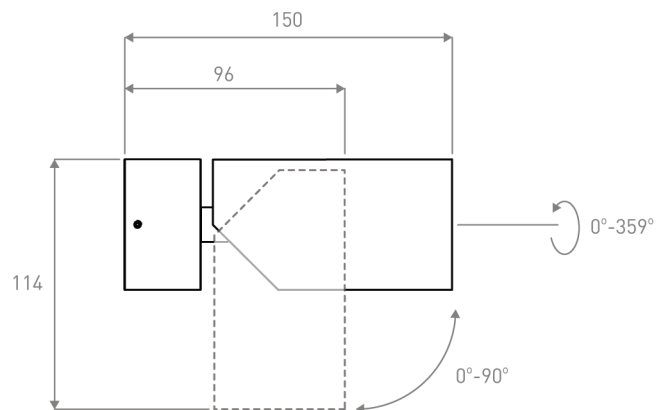
Unit:	Series:	Colour temp. (K):	Beam Angle:	Color:	Control:	Version:
W700.SHIPX	CR	2.7 (2700K)(Special order) 3K (3000K)	36°	B (Black) W (White)	PH (PHASE)	1.1

### Dimensions (mm)

Front view

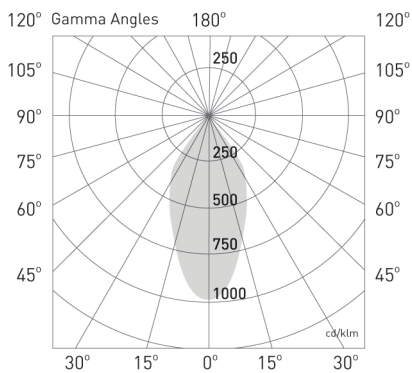


Side view



### Photometrics

Photometric Diagram



CCT Outputs

**CCT:** 2700K  
**Efficacy:** 65lm/W  
**Delivered lumen output:** 645lm  
**CRI:** >98  
**Standard deviation of colour Matching (SDCM):** 2 MacAdam steps

**CCT:** 3000K  
**Efficacy:** 66lm/W  
**Delivered lumen output:** 660lm  
**CRI:** >98  
**Standard deviation of colour Matching (SDCM):** 2 MacAdam steps

## Electrical

<b>Input Voltage:</b> 220V-240V	<b>Power Usage:</b> 10W	<b>Current:</b> 200mA	<b>Driver Power Factor:</b> 0.6	<b>Dimmable:</b> Yes
------------------------------------	----------------------------	--------------------------	------------------------------------	-------------------------

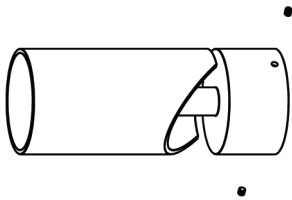
## Physical

Surface	<b>IP Rating:</b> IP65	<b>IK Rating:</b> IK07
---------	---------------------------	---------------------------

## Operational

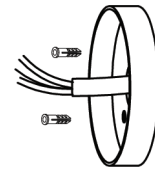
<b>Ambient temp.:</b> -20°C to 40°C	<b>Lifetime L70, B10:</b> 50,000 hrs	<b>Warranty:</b> 7 years
--	---	-----------------------------

## Installation



### Step 1

Unscrew the two grub screws from the top and bottom of the luminaire housing to release the base plate and junction box.



### Step 2

Thread the power cable through the base plate. Use the base plate as a guide to drill two pilot holes for the wall plugs.



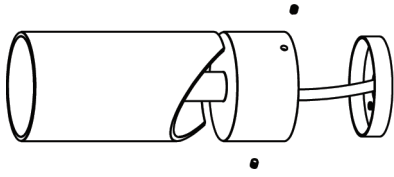
### Step 3

Once wall plugs have been pressed into the wall fasten the base plate to the wall using the screws provided.



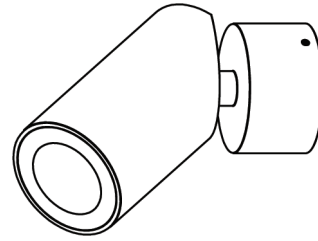
### Step 4

Connect the mains power cable to the terminal block.



### Step 5

Position the luminaire housing back to the base plate and secure by screwing the grub screws back in.



### Step 6

Once the light is installed, orient the luminaire to focus the light as required.