

# D600.RSXH Curve LED Light

## Datasheet



**TRU-COLOUR®**

### Product Codes

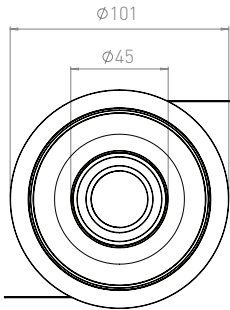
<b>Unit:</b> D600.RSXH	<b>Family:</b> CR	<b>Colour Temp. (K):</b> 2700K (2.7K) 3000K (3K) 4000K (4K) 5000K (5K)	<b>Beam Angle:</b> 15°-36° (15.36) (zoomable)	<b>Finish:</b> White (W) Black (B)	<b>Version:</b> 1.0	<b>Driver:</b> PHASE DALI 0-10V CASAMBI
---------------------------	----------------------	--	---	--	------------------------	---

### Photometrics

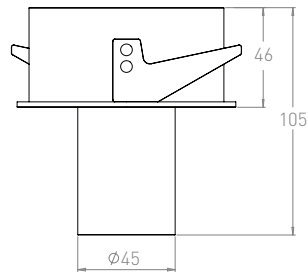
<b>Delivered lumen:</b> 2.7K - 410lm 3K - 420lm 4K - 430lm 5K - 465lm	<b>Efficacy</b> 2.7K - 59lm/W 3K - 60lm/W 4K - 61lm/W 5K - 67lm/W	<b>CRI:</b> CRI97
---	---	----------------------

### Dimensions (mm)

Front



Side

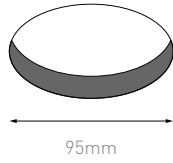


### Electrical

<b>Input Voltage:</b> AC200-220V	<b>Power Usage:</b> 7W	<b>Driver Power Factor:</b> >0.5	<b>IP Rating:</b> IP20	<b>Dimmable:</b> Yes
-------------------------------------	---------------------------	-------------------------------------	---------------------------	-------------------------

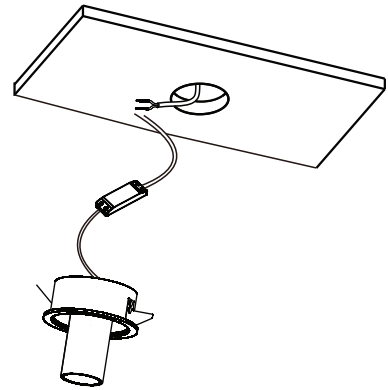
### Operational

<b>Ambient Temp.:</b> -20°C to 45°C	<b>Warranty:</b> 5 yrs
--	---------------------------



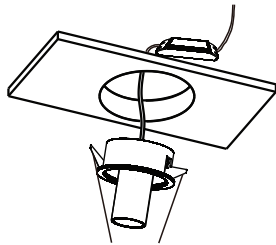
### Step 1

Using a 95mm hole saw, cut a hole in the ceiling at the desired location.



### Step 2

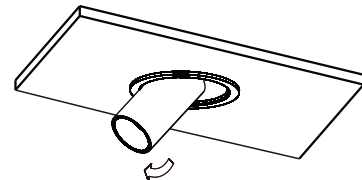
Plug the driver into a mounted general power outlet (GPO) in the ceiling.



Hold the springs

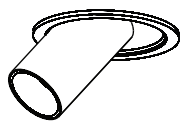
### Step 3

Pull back the springs and insert the luminaire into the ceiling cavity.



### Step 4

Once the light is installed, orient the luminaire using its universal gimbal to focus the light as required.



### Step 5

Installation complete.