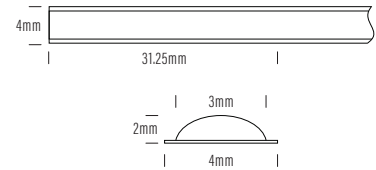
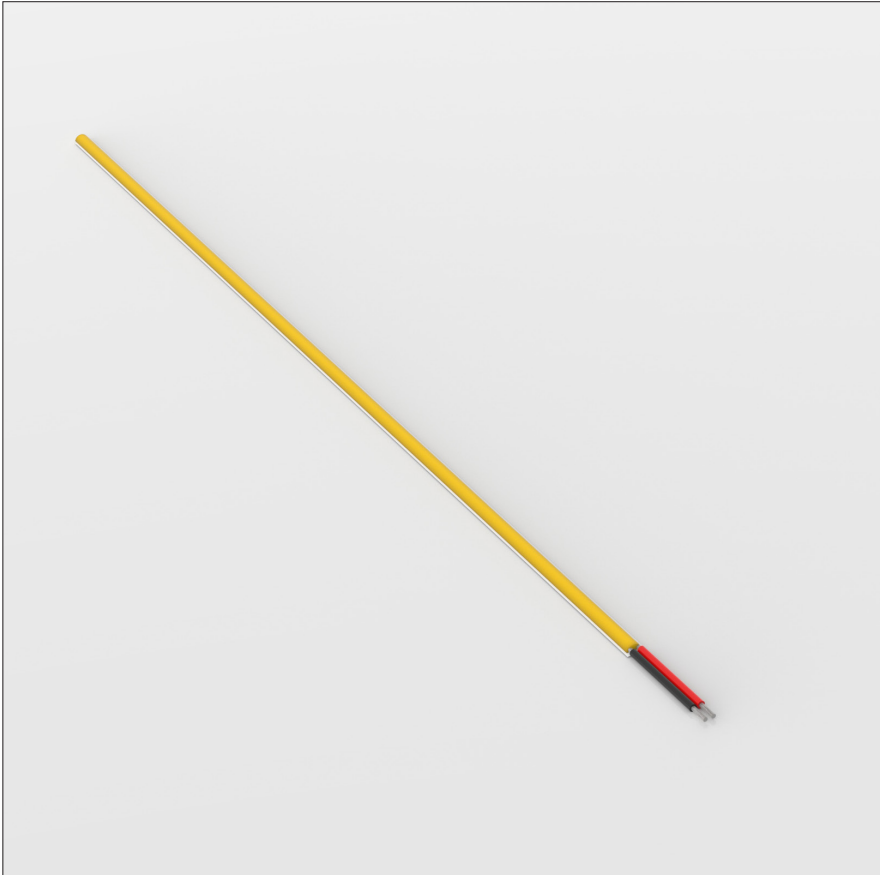


# TLI-172.MONO

## COB Strip



### Product

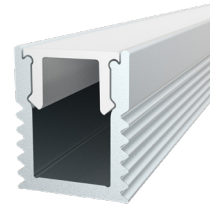
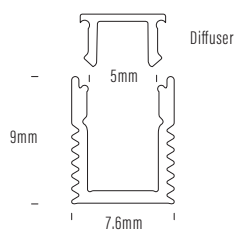
Voltage	24V DC
Watts (per Meter)	5W
IP Rating	IP20
Lumen Output (per Meter)	507lm - 580lm
CCT & Colour Options	2700k / 3000k / 4000k / 6500k
Working Mode	Constant Voltage (PWM) / DMX
Max Length (Single Power Feed)	5m
Max Length (Double Power Feed)	10m
Cut Interval	31.25mm
Bend Direction	Vertically
Minimum Bend Diameter	50mm
LED Type	Sanan COB
LED Qty / M	360pcs
Lumen Maintenance	50,000 Hours L70@ 30°C
Materials	3M Adhesive Backing
Emission Angle	180°
Operating Temperature	-20° to +40°C
Installation Temperature	5° to +35°C
Warranty	3 Year

# COB Strip



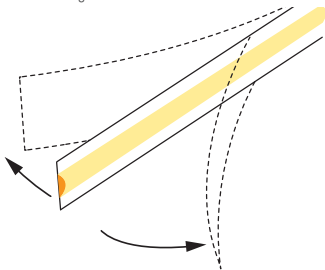
## Mounting Extrusion and Diffuser

TLI-172-ACC-01 (2m Aluminium Extrusion (5mm internal)

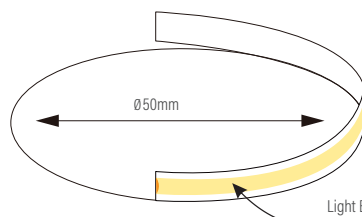


## Bending Directions

Light Direction



Minimum Bending Diameter



Light Emitting Surface

