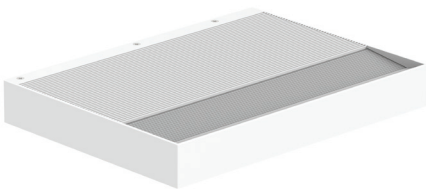


W2000.S Linear LED Light

Datasheet

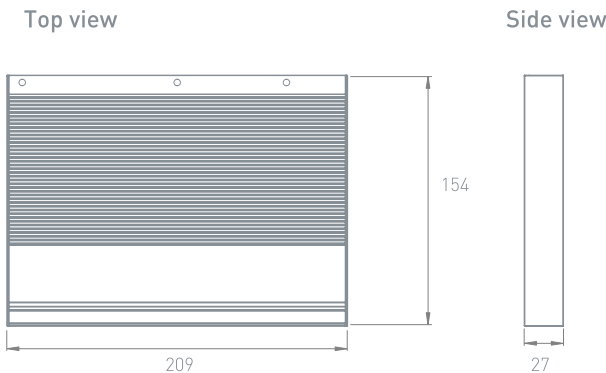


TRU-COLOUR®

Product Codes

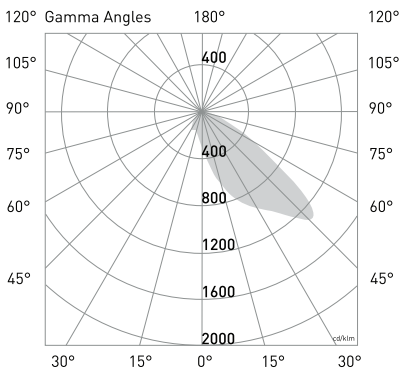
| | | | | |
|-----------------------------------------|------------------------|------------------------------------------------------------------------------------------------------|---------------------------------------|------------------------------------------|
| Unit: W2000.S | Family: LN | Colour temp. (K): 2.7K (2700K) (Special Order) 3K (3000K) 4K (4000K) (Special Order) | Beam Angle: AS (Asymmetric) | Finish: B (Black) W (White) |
| Driver: PHASE (Phase Dimming) | Version: 2.0 | | | |

Dimensions (mm)



Photometrics

Photometric Diagrams



CCT Output

CCT: 2700K
Efficacy: 63lm/W
Lumen output: 1975lm
CRI: 97
Standard deviationn of colour Matching (SDCM): 2 MacAdam steps

CCT: 4000K
Efficacy: 66lm/W
Lumen output: 2055lm
CRI: 97
Standard deviationn of colour Matching (SDCM): 2 MacAdam steps

CCT: 3000K
Efficacy: 65lm/W
Lumen output: 2015lm
CRI: 97
Standard deviationn of colour Matching (SDCM): 2 MacAdam steps

Electrical

Input Voltage:
AC220-240V

Power Usage:
31.12W

Driver Power Factor:
>0.9

IP rating:
IP40

IK rating:
IK07

Surge Protection:
3100V

Dimmable:
Yes

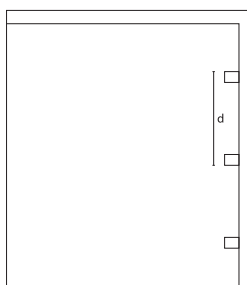
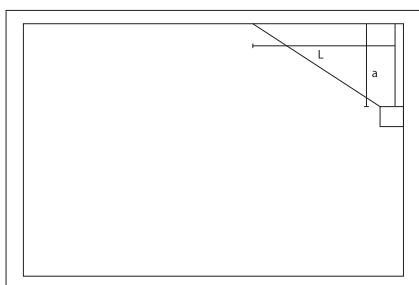
Operational

Ambient Temp.:
-20°C - 40°C

Lifetime:
50000hrs

Warranty:
7 years

Installation



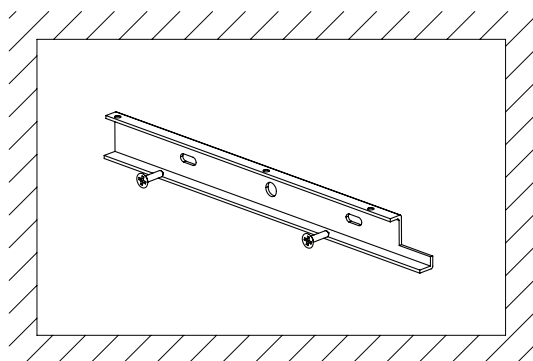
Installation Placement Recommendations:

The distance from the lamp to the ceiling (a) depends on the design requirements,

It should not be less than 0.8 metres, but not greater than 1.2 metres. ($1.2 \geq a \geq 0.8\text{m}$)

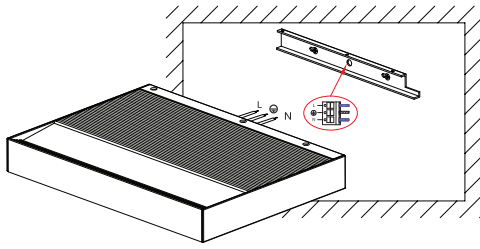
The spacing of the luminaires (d) is 1.2 times the distance from the lamp to the ceiling (a). ($d = 1.2 \times a$)

Maximum width of the ceiling is (L) which is up to 1.5 times the lamp-to-ceiling distance (a). ($L = 1.5 \times a$)



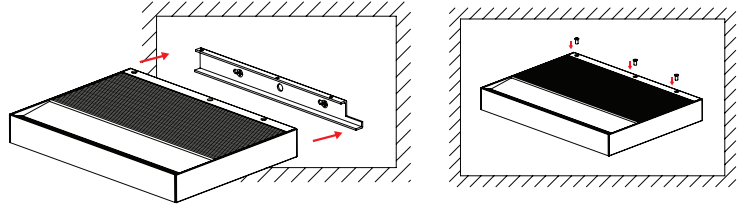
Step 1

Attach the mounting bracket onto the wall with enough distance from the ceiling.



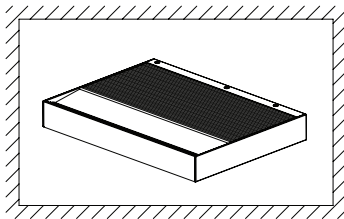
Step 2

Connect the wires accordingly.
Brown Wire is connected to Live Wire (L).
Blue Wire is connected to Neutral Wire (N).
Yellow and Green Wire is connected to Protecting Earthing (PE)



Step 3

Attach the luminaire onto the mounting bracket and fix using screws.



Step 4

Installation complete.